



July 2014

Draft Housing Strategy

Inside this issue:

| | |
|---------------------------|---|
| Draft Housing Strategy | 1 |
| Green dye spill in creek | 2 |
| Waterwatch Results | 3 |
| Waterwatch Reports | 3 |
| What's been happening? | 4 |
| Do you share our passion? | 4 |
| For the diary - 2014 | 4 |



Council Housing Strategy could affect Scotchmans Creek

Monash Planning Scheme

The Monash Planning Scheme, which implements the Council's vision and objectives for land use and development across the City, is required to be reviewed every four years. The Planning Scheme review is now occurring, and, as part of this work, Council has reviewed the existing Housing Strategy and is seeking community feedback on proposed changes. The strategy involves planning for anticipated population growth for Metropolitan Melbourne of another 2.5 million, to be a city of 6.5 million by 2050.

Your Committee has reviewed the Draft Housing Strategy and has a number of concerns about the proposed changes. Broadly, we consider that there is not sufficient protection for environmentally sensitive areas or a general consideration for environmental effects as urban density increases.

The Friends of Damper Creek Reserve Inc. (FoDCR) have the same concerns and it was

decided that the two groups would combine forces and make a joint submission to Council. We were fortunate to have the assistance of Libby Anthony, an experienced Planner and member of FoDCR, in putting together our submission.

In summary, the submission made the following points. The Draft Housing Strategy appears to use an overly simplistic formula for activity zones around railway stations (the 400m circle) which is not appropriate, at least, for areas north and south of the railway line from, roughly, Jordanville to Mount Waverley stations.

These areas are special for a multitude of environmental reasons but essentially they are characterised by the hilly landscape and the number of creeks that run through, providing them with the unique natural and unspoilt areas of Damper Creek and Valley Reserve. New residences in this area should demonstrate sympathy and consideration to

"Your Committee has a number of concerns about the proposed changes not sufficient protection for environmentally sensitive areas or a general consideration for environmental effects as urban density increases."

Draft Housing Strategy.....continued



Allocasuarina littoralis
Black she-oak

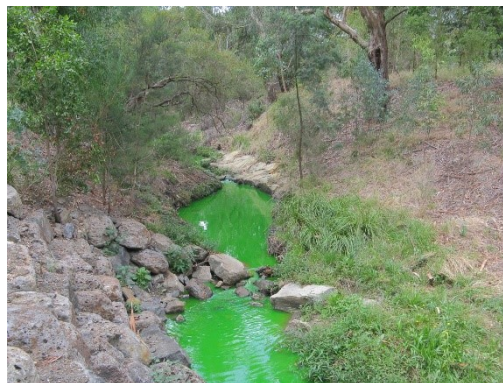
the natural environment and vegetation protection.

The inroads over the last few years of multiple units on larger blocks with higher levels of hard surfaces and the removal of canopy trees (despite the Vegetation Protection Overlay - VPO) is leading to larger volumes of storm water runoff during heavy rains, such that the creeks are now experiencing “one in a century” events as often as once every four years or less. Unless the areas surrounding the creeks which flow through this area are given protection from this rapid increase in hard surface, the situation will exacerbate leaving the Council with the prospect of dealing with very significant flooding problems which, if fixable at all, would be extraordinarily expensive and quite possibly deleterious to some of the areas that we are anxious to preserve.

There seems to be an inconsistency between an existing VPO area designated as Category 6: Dandenong Valley Escarpment, compared with other VPO areas currently designated in the Strategy as either Category 7: Garden City Suburbs, or Category 2: Accessible Areas. We believe that all the VPO areas in the City of Monash should be similarly designated under Category 6, i.e. “Provision of opportunities for modest housing growth and diversification with emphasis on preserving and enhancing Monash’s Garden City Character with emphasis on the protection of neighbourhood character, landscape and native vegetation”.

The submission was presented at a meeting with the Council on 13 May 2014. Present were Sue Wilkinson, Director of Planning, members of her staff and the three Mt. Waverley Ward Councillors.

Green dye spill in creek



Scotchmans Creek turns green

At about noon on Wednesday 12th March 2014, a passer-by phoned us to report a green stain in the creek, near Crosby Drive. We reported it to EPA and obtained a case number, which was useful when we emailed some photographs to them. The stain was a vivid green, extending about 200 metres

along the creek, which was flowing at a trickle. Later that afternoon, EPA informed Melbourne Water, who are responsible for managing the creek.

Once informed, Melbourne Water's response was impressive. An inspection crew arrived first, then a tanker which was used to cart away the worst of the stained water, finishing at about 9 pm. Signage was put up around the creek the next morning, and a news item placed on their website (<http://melbournewater.com.au/aboutus/news/Pages/Non-toxic-dye-spill-in-Scotchmans-Creek.aspx>). The stain was found to be a non-toxic green dye, and rain on the following weekend washed the remaining dye away.

If you see something like this in the creeks, please phone Melbourne Water (131 722), or the EPA (1300 EPA VIC or 1300 372 842).

“Once informed, Melbourne Water's response was impressive. An inspection crew arrived first, then a tanker which was used to cart away the worst of the stained water, finishing at about 9 pm.”

Waterwatch Results - May—June 2014

| Parameter | Site 1A Fiander arm YSC010 | | Site 1B Crosby arm YSC012 | | Site 2 Regent Street YSC020 | | Site 3 Valley Creek YVA100 | | Site 4 Wetland upper YSC099 | | Site 5 Wetland lower YSC100 | |
|------------------------------|----------------------------------|----------|---------------------------------|----------|-----------------------------------|----------|----------------------------------|----------|-----------------------------------|----------|-----------------------------------|----------|
| Date | 25/05/14 | 22/06/14 | 25/05/14 | 22/06/14 | 25/05/14 | 22/06/14 | 25/05/14 | 22/06/14 | 25/05/14 | 22/06/14 | 25/05/14 | 22/06/14 |
| Air temperature °C | 14.0 | 11.0 | 14.0 | 11.0 | 18.0 | 10.0 | 18.0 | 10.5 | 15.0 | 11.0 | 18.0 | 11.0 |
| Water temperature °C | 14.0 | 11.0 | 14.0 | 11.0 | 15.5 | 11.0 | 14.0 | 10.0 | 14.0 | 11.0 | 16.0 | 11.0 |
| pH | 7.1 G | 7.4 G | 7.1 G | 7.3 G | 7.0 E | 7.4 G | 7.0 E | 7.2 G | 6.8 E | 7.2 G | 6.5 E | 6.8 E |
| Oxygen concentration mg/l | 10.0 E | N/M | 8.8 E | N/M | N/M | N/M | N/M | N/M | N/M | N/M | N/M | N/M |
| Conductivity E.C. | 100 G | 540 P | 90 E | 510 P | 160 G | 570 P | 270 F | 450 F | 250 F | 570 P | 90 E | 160 G |
| Turbidity F.T.U | 38 D | 10 E | 29 P | 12 E | 34 D | 16 G | 30 D | 19 F | 18 F | 10 E | 21 P | 23 P |
| Phosphorus, soluble ppm | 0.137 D | N/M | 0.124 D | N/M | N/M | N/M | N/M | N/M | N/M | N/M | N/M | N/M |
| Ammonium NH ₄ ppm | 0.15 F | 0.00 E | 0.04 E | 0.00 E | 0.10 F | 0.10 F | 0.02 E | 0.00 E | 0.06 G | 0.04 E | 0.05 G | 0.15 F |
| Stream flow L/s | 117.6 | 6.3 | 29.9 | 3.9 | 56.4 | 11.7 | 8.9 | 0.1 | N/M | N/M | N/M | N/M |
| Habitat assessment/50 | 24 F | 24 F | 26 F | 26 F | 24 F | 24 F | 28 F | 28 F | 21 F | 21 F | 21 F | 21 F |

E=Excellent ■ G=Good ■ F=Fair ■ P=Poor ■ D=Degraded ■ N/M= Not measured N/A= Not applicable

Waterwatch Reports

| Macro Invertebrates - May | Site 1A Fiander Arm YSC010 | Site 1B Crosby Arm YSC012 |
|-----------------------------------|----------------------------------|---------------------------------|
| Very Sensitive | | |
| <i>Caddisfly larvae</i> | 8 | 3 |
| Sensitive | | |
| <i>Damselfly larvae</i> | 9 | 15 |
| <i>Dragonfly larvae</i> | 2 | 13 |
| <i>Freshwater mussel</i> | 0 | 13 |
| Tolerant | | |
| <i>Leeches</i> | 1 | 6 |
| <i>Snails (freshwater)</i> | 35 | 20 |
| <i>Flatworms</i> | 9 | 30 |
| Very Tolerant | | |
| <i>Freshwater segmented worms</i> | 30 | 30 |
| <i>Blood worms</i> | 30 | 30 |
| Abundance Category | 3 | 3 |
| Total Bug Score | 30 | 35 |
| Stream Condition | Poor | Poor |

May

We found a wide variety of macro-invertebrates in both upstream sites. Both samples included some Caddisfly larvae which are very sensitive to degraded water quality and we rarely find any waterbugs in this category. However, although they may have been present in the samples, we did not record sufficient total numbers of invertebrates to achieve a Fair condition rating.

June

The streams were flowing slowly and looking clear. However conductivity was high (Poor) at most of the sites.

The wetlands ponds were a bit cloudy, probably from rainfall over the previous weekend.

There is persistent litter in the Crosby arm (Glen Waverley Drain), including bottles, plastic, polystyrene foam and clothing.

The habitat assessments were almost the same as in June 2013, slipping slightly to Fair at all 3 sites.

- The vegetation on the banks of the pool in Scotchmans Creek at Regent Street still has not regenerated following lowering of the pool and weed clearance some years ago.
- The trees and bushes on the north side of Valley Creek are progressing well, but the south side still has a large bare patch after weed clearance.
- The wetlands pond (the lowest pond, at the western end) looks attractive with reeds thickening around it, but the surrounding area has few trees and is mown grass which is not good habitat.

315 Lawrence Road
Mount Waverley
Victoria 3149

Phone: 03 9802 3481
Email: tedmason@bigpond.net.au
Incorporation No. A0037872K

We're on the Web!
scotchmanskreekfriends.org.au

"Greening Monash"

Monash World Environment Day Winners - 2008



What's been happening?

Quite a lot, actually.

- On 20 March, at our General Meeting, we had Bernadette Swanson take us on a virtual tour of the Cranbourne Botanic Gardens.
- This was followed, on 21 March, with a conducted visit to the Mount Waverley Wetlands for Melbourne University Students.
- In co-operation with the Council PALS, on 24 March, we took a walk along the creek with a group of Seniors, finishing up with morning tea in Fairway Reserve.
- Then, on 15 May we held a special meeting when Age-friendly Ambassadors asked us what we thought was needed to make our City an "Age-friendly Monash".
- We've also had a number of committee meetings, Valley Reserve Work Parties and Waterwatch sessions.

Do you share our passion?

Quite clearly, your committee members have a passion to care for Scotchmans Creek. They've been doing it for a number of years, some since the FSCVR was first formed. They have enjoyed it and got great satisfaction from their achievements. Some are getting a bit old and tired and would love to see some of the legendary "new blood" give the committee a liven-up injection.

If you do share our passion and would like to get your ideas considered for future projects to improve Scotchmans Creek how about thinking about joining the committee? We could certainly do with your help. Perhaps you've thought about it before but never taken the next step. It's not a great commitment in time, you would get to work with friendly people and have the pleasure and satisfaction of making a real difference to the environment, particularly around our Scotchmans Creek reserves.

Our Annual General Meeting will be coming up in October, so now is the perfect time to start thinking about it. We would be very happy to give you any information you need. You could contact us by email (info@scotchmanskreekfriends.org.au) or phone 9802 3481.

*Printed by courtesy of
the City of Monash as
a community service.
Responsibility for edi-
torial content is solely
that of the editor.*



**Melbourne
Water**

*Production of this
newsletter is funded
through Melbourne
Water's River Health
Incentives Program*

For the diary - 2014

National Tree Day Planting
Sunday, 27 July 2014 - Fairway Reserve -
9:00am-1:00pm

Put this one in the diary now! Make your mark in Monash by planting some of the 8000 native plants we are buying with our Melbourne Water grant. Get a party together with your family and friends.

As in recent years, the registration point will be at the Scout Halls car park at the end of Fairway Avenue (Melways Ref. 70:E5). The planting will be along Scotchmans Creek towards the freeway tunnels.

The Scouts will be cooking up a free yummy lunchtime sausage sizzle for everyone to enjoy.

Speaker's Forum Meeting - "SPARC in Valley Reserve". Wednesday, 21 August 2014 -
Alvie Hall - 7:30pm

The Monash Council is planning to add some new facilities and upgrade the current ones in Valley Reserve - the program is called "SPARC in your Park".

Come and find out what is being planned, ask questions and make your comments. The presentation will be by council officers and the contractor.

Alvie Hall is at 314 High Street Road, Mount Waverley - Mel. Ref. 61:D11 (on the corner of High Street and Alvie Roads).