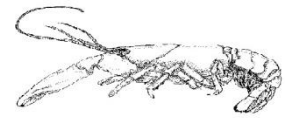




## Friends of Scotchmans Creek and Valley Reserve Inc



Inc No A0037872K

### Waterwatch Report 22 June 2025

#### Scope

- Basic chemistry and ammonium tests at all sites.
- Dissolved Oxygen and Phosphate tests at upstream sites (YSC010, YSC012 (also called 1a, 1b)).
- Flow measurement and/or observations at all sites.
- Habitat surveys at the upstream sites.

#### Weather Conditions

Previous week: 3mm rain

Previous 24 hours: Sunny

During testing: Cold, sunny

#### Water Quality Results

	<b>YSC010 Site 1A Fiander arm</b>	<b>YSC012 Site 1B Crosby arm</b>	<b>YSC020 Site 2 Regent St</b>	<b>YVA100 Site 3 Valley Creek</b>
Air Temp C	10	10	13	13
Water Temp C	8	8	9.5	8
pH	7.1 G	6.7 E	7.0 E	6.8 E
Oxygen Conc. mg/l	10.0 E	8.1 E		
Conductivity E.C.	500 P	260 F	460 F	190 G
Turbidity F.T.U	13 E	7 E	12 E	13 E
Phosphorus, soluble ppm	0.134 D	0.114 D		
Ammonium NH <sub>4</sub> <sup>+</sup> ppm	0.01 E	0.09 G	0.10 F	0.00 E
Stream Flow estimate l/s	3.4	5.6	12.6	0.1 (guesstimate)

(E = Excellent, G = Good, F = Fair, P = Poor, D = Degraded)

## Habitat Surveys

Site YSC010 (1a), Scotchmans Creek upstream of Crosby Drive/Turner Court. still very little in-stream vegetation. Bank vegetation increased weeds. The numerical scoring was 22/40, rated Fair.

Site YSC012 (1b), Glen Waverley Drain. recent planting on south bank. Reduced in-stream vegetation. Generally good bank & verge vegetation cover. The numerical scoring was 27/40, rated Fair.

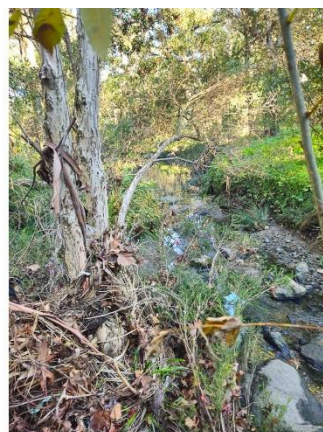
The habitat photosets are below.



1 Site 1a - Upstream 250622\_095618



2 Site 1a - Instream 250622\_095630



3 Site 1a - Downstream 250622\_095701



4 Site 1b - Upstream 260622\_100620



5 Site 1b - Instream 260622\_100627



6 Site 1b - Downstream 260622\_100635

## Comments:

- Chemical results typical of low flow conditions were low turbidity, high conductivity and high soluble phosphorus at site 1a (YSC010, Scotchmans Ck upstream of Blackburn Rd).
- Phosphorus results at site 1a were high and similar to those from site 1b today. We had the same result in November 2024.
- Habitat scoring for Scotchmans Ck at Crosby Drive/Turner Court.arm still rated Fair despite poor in-stream and increased weeds on the banks.
- The habitat scoring for the Glen Waverley Drain remains Fair. The council's bushcrew had recently planted on the north bank.